

**KARNATAK UNIVERSITY, DHARWAD**  
**(Karnataka State)**

**CRITERIA-I**

**EVIDENCE(S) AS PER SOP**

<b>Metric No.</b> <b>1.4.1</b>	<b>Structured feedback about curricular received from</b> <b>1) Students, 2) Teachers, 3) Employers, 4) Alumni 5) Parents for design and review of syllabus</b> <b>Semester wise /year wise Options:</b> <b>A. Any 4 of above</b> <b>B. Any 3 of above</b> <b>C. Any 2 of above</b> <b>D. Any 1 of above</b> <b>E. None of the</b>
<p>➤ <i>Stakeholder feedback analysis report.</i></p> <p>➤ <i>Action taken report by the Institution on feedback report</i></p>	

**2019-20**

*Report on*  
*360<sup>0</sup> Structured Feedback from Stakeholders*  
*(Students, Teachers,*  
*Employers, Alumni and Parents)on*  
*Curriculum*

# **INDEX**

<b><i>Sr. No.</i></b>	<b><i>Content</i></b>	<b><i>Page Numbers</i></b>
<b><i>1</i></b>	<b><i>Feedback Analysis of Student</i></b>	<b><i>1-3</i></b>
<b><i>2</i></b>	<b><i>Feedback Analysis of Teacher</i></b>	<b><i>3-5</i></b>
<b><i>3</i></b>	<b><i>Feedback Analysis of Employer</i></b>	<b><i>5-7</i></b>
<b><i>4</i></b>	<b><i>Feedback Analysis of Alumni</i></b>	<b><i>7-10</i></b>
<b><i>5</i></b>	<b><i>Feedback Analysis of Parents</i></b>	<b><i>10-12</i></b>
<b><i>6</i></b>	<b><i>Action Taken on the Feedback</i></b>	<b><i>12-13</i></b>

The feedback on curriculum by the students with other aspects has been a routine practice of Internal Quality Assurance Cell (IQAC). Exclusive feedback forms have been designed for the said purpose. The parameters basis of feedback are Learning values (in terms of skills, concepts, knowledge, analytical abilities, or broadening perspective), applicability/relevance to real life situations, depth of the Course content, extent of coverage of course, internal assessment procedure etc. The students' feedback has been a best practice of IQAC of KUD. We started collecting curriculum feedback from the Academic Year 2019-20 and 2020-21. This report presents the details of the feedback and its analysis with action taken on feedback aspects.

## **1. FEEDBACK FROM STUDENTS:**

### **A. Number of feedback received from students: 844**

### **B. Questions Asked to students**

1. Why did you choose this course?

- |                       |                          |
|-----------------------|--------------------------|
| a) Degree requirement | b) Time offered          |
| c) Interest           | d) University reputation |

2. Teachers

<b>Low</b>	<b>Moderate</b>	<b>High</b>	<b>Very High</b>	<b>Very Low</b>
------------	-----------------	-------------	------------------	-----------------

3. Level of effort

<b>Low</b>	<b>Moderate</b>	<b>High</b>	<b>Very High</b>	<b>Very Low</b>
------------	-----------------	-------------	------------------	-----------------

4. Level of effort put into the course

<b>Low</b>	<b>Moderate</b>	<b>High</b>	<b>Very High</b>	<b>Very Low</b>
------------	-----------------	-------------	------------------	-----------------

5. Contribution of learning

<b>Low</b>	<b>Moderate</b>	<b>High</b>	<b>Very High</b>	<b>Very Low</b>
------------	-----------------	-------------	------------------	-----------------

6. Level of skill/knowledge at start of course

<b>Low</b>	<b>Moderate</b>	<b>High</b>	<b>Very High</b>	<b>Very Low</b>
------------	-----------------	-------------	------------------	-----------------

7. Level of skill/knowledge at end of course

<b>Low</b>	<b>Moderate</b>	<b>High</b>	<b>Very High</b>	<b>Very Low</b>
------------	-----------------	-------------	------------------	-----------------

8. Level of skill/knowledge Required to complete the course

<b>Low</b>	<b>Moderate</b>	<b>High</b>	<b>Very High</b>	<b>Very Low</b>
------------	-----------------	-------------	------------------	-----------------

9. Contribution of course to your skill/knowledge

<b>Low</b>	<b>Moderate</b>	<b>High</b>	<b>Very High</b>	<b>Very Low</b>
------------	-----------------	-------------	------------------	-----------------

10. Depth of course content

<b>Low</b>	<b>Moderate</b>	<b>High</b>	<b>Very High</b>	<b>Very Low</b>
------------	-----------------	-------------	------------------	-----------------

Skill and responsiveness of the instructor

11. Lectures were clear and well organized

<b>Strongly disagree</b>	<b>Disagree</b>	<b>Neutral</b>	<b>Agree</b>	<b>Strongly agree</b>
--------------------------	-----------------	----------------	--------------	-----------------------

12. Instructor stimulated students' interest

<b>Strongly disagree</b>	<b>Disagree</b>	<b>Neutral</b>	<b>Agree</b>	<b>Strongly agree</b>
--------------------------	-----------------	----------------	--------------	-----------------------

13. Instructor was available and helpful

<b>Strongly disagree</b>	<b>Disagree</b>	<b>Neutral</b>	<b>Agree</b>	<b>Strongly agree</b>
--------------------------	-----------------	----------------	--------------	-----------------------

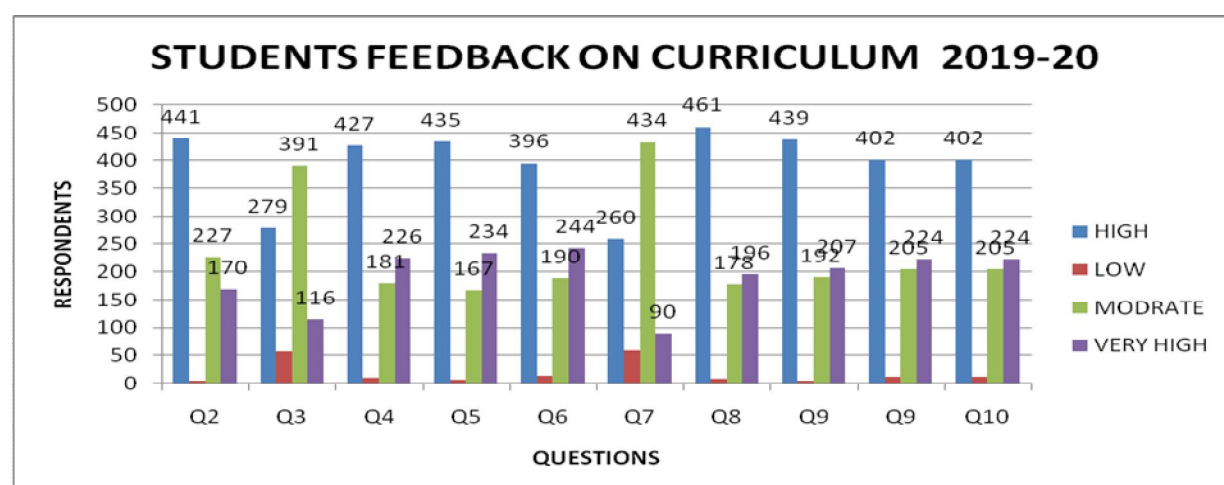
14. Grading was prompt and had useful feedback  
**Strongly disagree**    **Disagree**    **Neutral**    **Agree**    **Strongly agree**
- Course Content
15. Learning objectives were clear  
**Strongly disagree**    **Disagree**    **Neutral**    **Agree**    **Strongly agree**
16. Course content was organized and well planned  
**Strongly disagree**    **Disagree**    **Neutral**    **Agree**    **Strongly agree**
17. Course workload was appropriate  
**Strongly disagree**    **Disagree**    **Neutral**    **Agree**    **Strongly agree**
18. [Course organized to allow all students to participate fully  
**Strongly disagree**    **Disagree**    **Neutral**    **Agree**    **Strongly agree**

Q1. Why did you choose this course?

Response	No. of Students	Percentage
Degree requirement	188	22.27
Time offered	7	0.83
Interest	189	22.39
University reputation	460	54.50
<b>Total</b>	<b>844</b>	<b>100.00</b>

Out of 844 students, approximately 54 percent of the students joined the programs because of the reputation of the University, 22 percent of the students joined because of their interest.

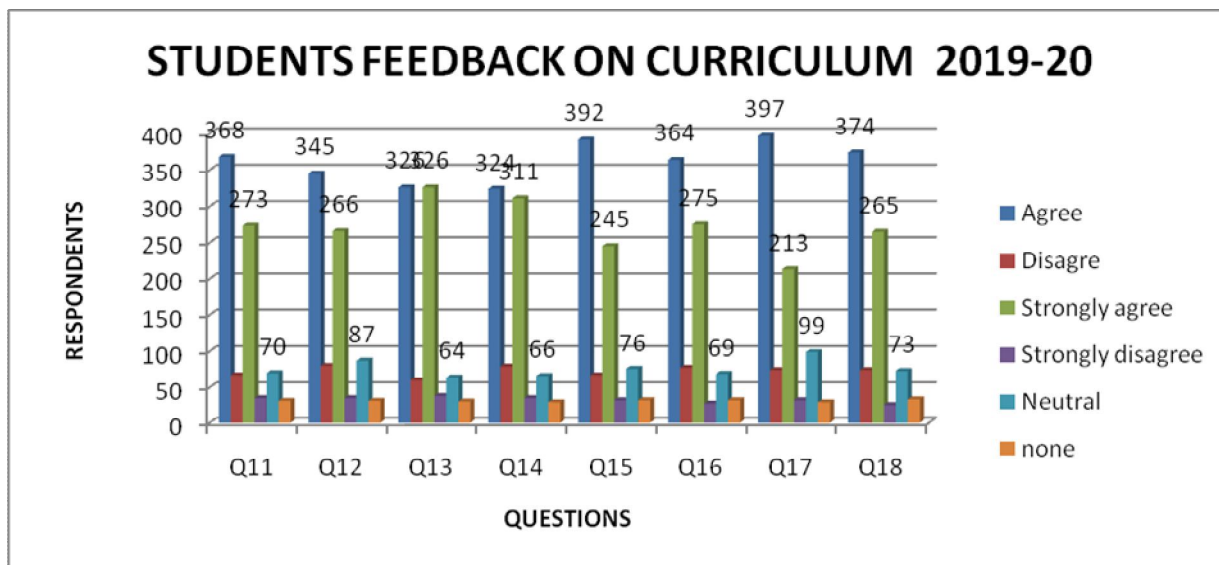
STUDENTS FEEDBACK ON CURRICULUM 2019-20 (Q2 – Q10)										
	Q2	Q3	Q4	Q5	Q6	Q7	Q8	Q9	Q9	Q10
HIGH	441	279	427	435	396	260	461	439	402	402
LOW	6	58	10	8	14	60	9	6	13	13
MODRATE	227	391	181	167	190	434	178	192	205	205
VERY HIGH	170	116	226	234	244	90	196	207	224	224
<b>TOTAL</b>	<b>844</b>	<b>844</b>	<b>844</b>	<b>844</b>	<b>844</b>	<b>844</b>	<b>844</b>	<b>844</b>	<b>844</b>	<b>844</b>



**Graph 1: Number of respondents for each of 8 questions by the students**

Out of 844 students, majority of the students are given positive feedback about the curriculum related questions. (Q2 to Q10)

<b>STUDENTS FEEDBACK ON CURRICULUM 2019-20 (Q11 – Q18)</b>								
	<b>Q11</b>	<b>Q12</b>	<b>Q13</b>	<b>Q14</b>	<b>Q15</b>	<b>Q16</b>	<b>Q17</b>	<b>Q18</b>
<b>Agree</b>	368	345	326	324	392	364	397	374
<b>Disagree</b>	67	80	60	79	67	77	74	74
<b>Strongly agree</b>	273	266	326	311	245	275	213	265
<b>Strongly disagree</b>	35	35	38	35	32	27	32	25
<b>Neutral</b>	70	87	64	66	76	69	99	73
<b>None</b>	31	31	30	29	32	32	29	33
<b>TOTAL</b>	<b>844</b>	<b>844</b>	<b>844</b>	<b>844</b>	<b>844</b>	<b>844</b>	<b>844</b>	<b>844</b>



**Graph 2: Number of respondents for each of 8 questions by the students**

Out of 844 students, majority of the students are strongly agreed that teachers are responsive, helpful, and skillful and prompt related to teaching and evaluation process. (Q11 to Q18)

## **2. FEEDBACK FROM TEACHERS:**

We have also taken the feedback from teacher on design and review of syllabus. We have designed a special feedback form on curriculum development. We have received feedback from 443 teachers. The details of feedback are as follow.

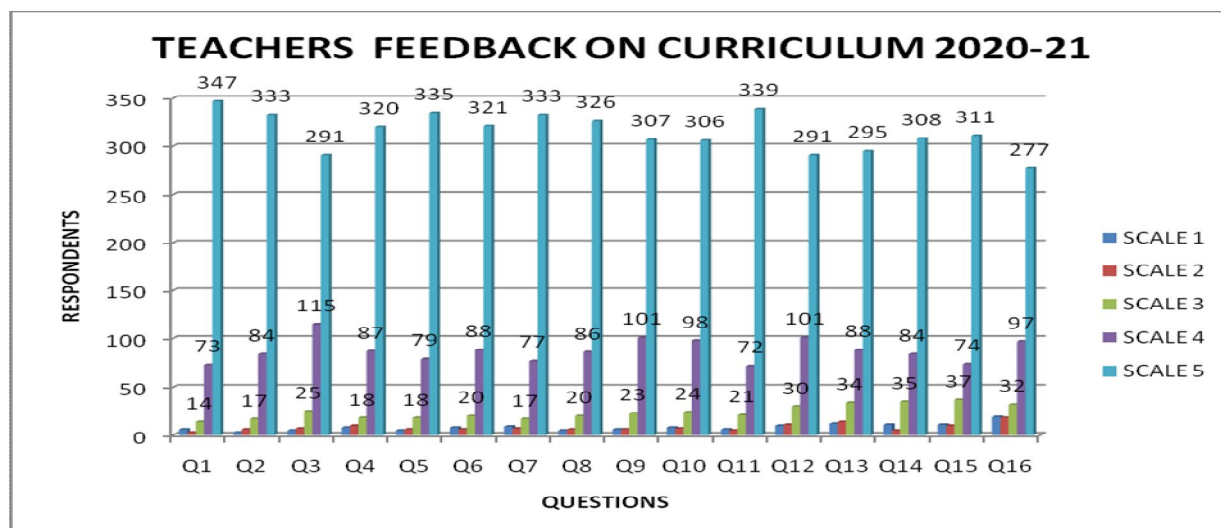
### **A. Number of feedback received = 443**

### **B. Questions Asked to Teachers**

1. The allocation of the credits to the course is appropriate  
**1-Very Poor, 2- Poor, 3- Average, 4- Good and 5-Excellent**
2. The depth of the course content is adequate to have significant learning outcomes  
**1-Very Poor, 2- Poor, 3- Average, 4- Good and 5-Excellent**
3. Syllabus is sufficient to bridge the gap between industry standards /current global scenarios and academics.  
**1-Very Poor, 2- Poor, 3- Average, 4- Good and 5-Excellent**
4. The timely coverage of syllabus is possible in the mentioned number of hours  
**1-Very Poor, 2- Poor, 3- Average, 4- Good and 5-Excellent**

5. The units/sections in the syllabus are properly sequenced  
**1-Very Poor, 2- Poor, 3- Average, 4- Good and 5-Excellent**
6. The recommended textbooks are adequate and map onto the syllabus  
**1-Very Poor, 2- Poor, 3- Average, 4- Good and 5-Excellent**
7. Sufficient reference material and books are available for the topics mentioned in the syllabus.  
**1-Very Poor, 2- Poor, 3- Average, 4- Good and 5-Excellent**
8. The programme and curriculum is enriched as compared to similar programme offered by other universities.  
**1-Very Poor, 2- Poor, 3- Average, 4- Good and 5-Excellent**
9. The designed experiments stimulate the interest of students in the subject and deepen their understanding through relating theory to practice (Experiential learning).  
**1-Very Poor, 2- Poor, 3- Average, 4- Good and 5-Excellent**
10. The practical's enabling to develop experimental, design, problem solving and analysis skills of the students.  
**1-Very Poor, 2- Poor, 3- Average, 4- Good and 5-Excellent**
11. The Vision, philosophy & objectives of the University are known  
**1-Very Poor, 2- Poor, 3- Average, 4- Good and 5-Excellent**
12. University provides opportunities for continuous development of Staff  
**1-Very Poor, 2- Poor, 3- Average, 4- Good and 5-Excellent**
13. Good facility and encouragement to the teachers for their research  
**1-Very Poor, 2- Poor, 3- Average, 4- Good and 5-Excellent**
14. Authorities are approachable and accessible  
**1-Very Poor, 2- Poor, 3- Average, 4- Good and 5-Excellent**
15. There is a mechanism for feedback, review and performance enhancement for the staff  
**1-Very Poor, 2- Poor, 3- Average, 4- Good and 5-Excellent**
16. There is a recognition/ Incentive/ Appreciation for the individual's work  
**1-Very Poor, 2- Poor, 3- Average, 4- Good and 5-Excellent**

<b>TEACHERS FEEDBACK ON CURRICULUM 2019-20 (Q1 – Q16)</b>																
	<b>Q1</b>	<b>Q2</b>	<b>Q3</b>	<b>Q4</b>	<b>Q5</b>	<b>Q6</b>	<b>Q7</b>	<b>Q8</b>	<b>Q9</b>	<b>Q10</b>	<b>Q11</b>	<b>Q12</b>	<b>Q13</b>	<b>Q14</b>	<b>Q15</b>	<b>Q16</b>
<b>SCALE 1</b>	6	3	5	8	5	8	9	5	6	8	6	10	12	11	11	19
<b>SCALE 2</b>	3	6	7	10	6	6	7	6	6	7	5	11	14	5	10	18
<b>SCALE 3</b>	14	17	25	18	18	20	17	20	23	24	21	30	34	35	37	32
<b>SCALE 4</b>	73	84	115	87	79	88	77	86	101	98	72	101	88	84	74	97
<b>SCALE 5</b>	347	333	291	320	335	321	333	326	307	306	339	291	295	308	311	277
<b>TOTAL</b>	<b>443</b>	<b>443</b>	<b>443</b>	<b>443</b>	<b>443</b>	<b>443</b>	<b>443</b>	<b>443</b>	<b>443</b>	<b>443</b>	<b>443</b>	<b>443</b>	<b>443</b>	<b>443</b>	<b>443</b>	<b>443</b>



**Graph 3: Number of Teachers responding on curricular based on 1 to 5 scales. On 5 point scale 1 denotes very poor and 5 denote Excellent.**

### 3. FEEDBACK FROM EMPLOYERS

We have taken the feedback from employer on design and review of syllabus. We have received feedback from 52 employers. The details of feedback are as follow.

#### A. Number of feedback received =52

#### B. Questions Asked to Employers

a. No. of candidates employed who are from Karnatak University

1. Technical skills/knowledge of the employee

1. Poor 2. Satisfactory 3) Good 4) Very Good 5) Excellent

2. General communication skills

1. Poor 2. Satisfactory 3) Good 4) Very Good 5) Excellent

3. Developing practical solutions to work place problems

1. Poor 2. Satisfactory 3) Good 4) Very Good 5) Excellent

4. Working as part of a team

1. Poor 2. Satisfactory 3) Good 4) Very Good 5) Excellent

5. Innovative and Creative in response to workplace challenges

1. Poor 2. Satisfactory 3) Good 4) Very Good 5) Excellent

6. Self-motivated and taking on appropriate level of responsibility

1. Poor 2. Satisfactory 3) Good 4) Very Good 5) Excellent

7. Open to new ideas and learning new techniques

1. Poor 2. Satisfactory 3) Good 4) Very Good 5) Excellent

8. Ability to contribute to the goal of the organization

1. Poor 2. Satisfactory 3) Good 4) Very Good 5) Excellent

9. Relationship with seniors/peers/subordinates



1. Poor 2. Satisfactory 3) Good 4) Very Good 5) Excellent  
10. Involvement in social activities

1. Poor 2. Satisfactory 3) Good 4) Very Good 5) Excellent  
11. Ability to take up extra responsibility

1. Poor 2. Satisfactory 3) Good 4) Very Good 5) Excellent  
12. Obligation to work beyond schedule if required

1. Poor 2. Satisfactory 3) Good 4) Very Good 5) Excellent  
13. On a scale of 1 to 10 how do you rate your overall satisfaction about the Karnatak University students?

1 Very Poor -----10 Highly Relevant

14. On a scale of 1 to 10 how likely are your plans to prefer Karnatak University graduates in your future hiring?

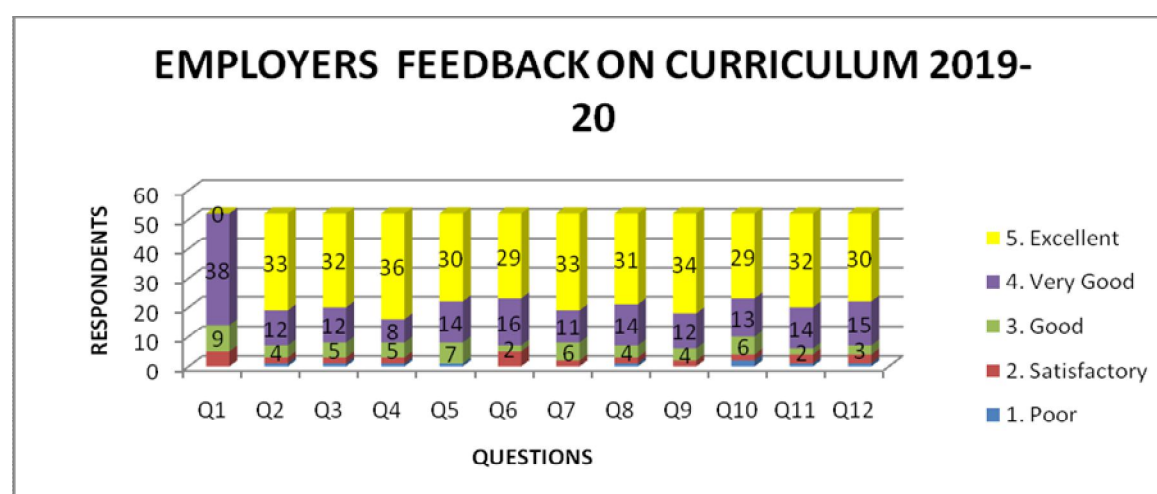
1 Least Likely -----10 Most Likely

b. What specific comments do you have regarding the Curriculum?

c. How could our programs be improved?

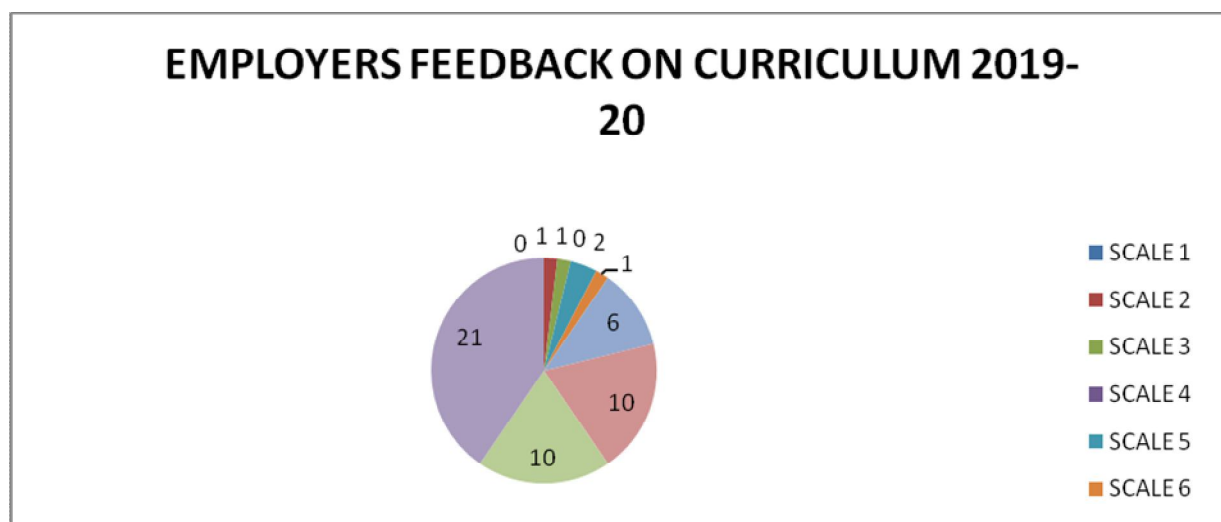
Please provide your contact details in case our assessment team members wish to contact you for further details. (Email.ID: Phone):

EMPLOYERS FEEDBACK ON CURRICULUM 2019-20 (Q1 - Q12)												
	Q1	Q2	Q3	Q4	Q5	Q6	Q7	Q8	Q9	Q10	Q11	Q12
1. Poor	0	1	1	1	1	0	0	1	0	2	1	1
2. Satisfactory	5	2	2	2	0	5	2	2	2	2	3	3
3. Good	9	4	5	5	7	2	6	4	4	6	2	3
4. Very Good	38	12	12	8	14	16	11	14	12	13	14	15
5. Excellent	0	33	32	36	30	29	33	31	34	29	32	30
TOTAL	52	52	52	52	52	52	52	52	52	52	52	52



**Graph 4: Number of respondents on curricular by employs based on 1 to 5 scales. Scale 1 denotes poor and 5 denotes Excellent.**

<b>EMPLOYERS FEEDBACK ON CURRICULUM 2019-20 (Q13 &amp; Q14)</b>		
	<b>Q13</b>	<b>Q14</b>
<b>SCALE 1</b>	0	0
<b>SCALE 2</b>	1	0
<b>SCALE 3</b>	1	0
<b>SCALE 4</b>	0	1
<b>SCALE 5</b>	2	1
<b>SCALE 6</b>	1	3
<b>SCALE 7</b>	6	5
<b>SCALE 8</b>	10	8
<b>SCALE 9</b>	10	10
<b>SCALE 10</b>	21	24
<b>TOTAL</b>	<b>52</b>	<b>52</b>



**Graph 5: Number of respondents on curricular by employs on 1 t 10 scale. Scale 1 denotes Very Poor and Least Likely and 10 denote Highly Relevant and Most Likely for Q13 & Q14 respectively.**

## 4. FEEDBACK FROM ALUMINI

We have taken the feedback responses by alumni of KUD on design and review of syllabus. We have designed a special feedback form on curriculum development. We have received feedback from 413 alumni. The details of feedback are as follow.

**A. Total feedback received = 413**

**B. Questions Asked to Alumini**

Name :-----

Year of Passing out :-----

Course studied :-----

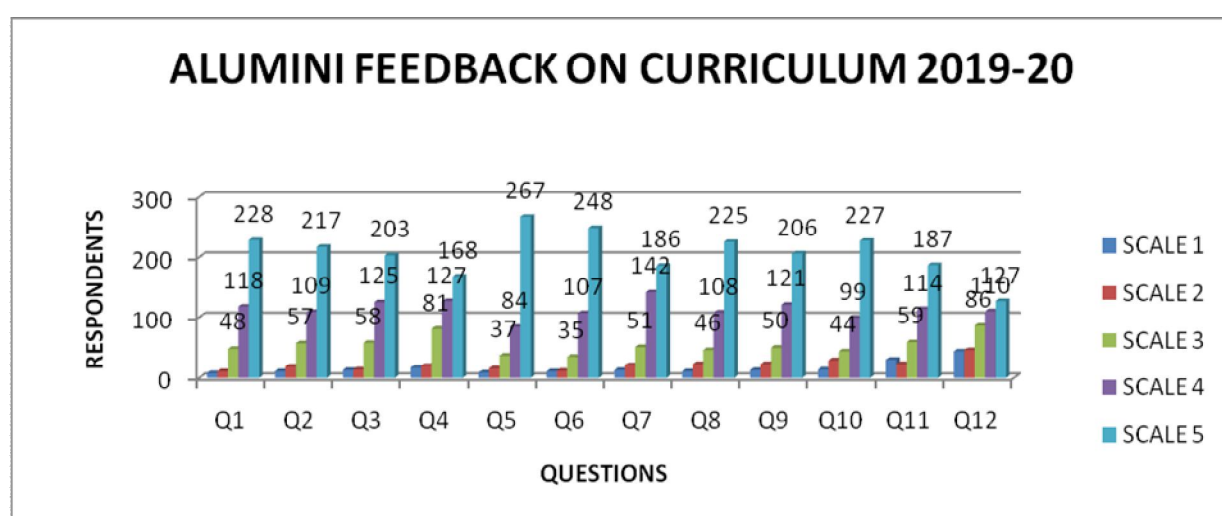
**Present Address with Details**

1. Admission Procedure/  
**1. Poor    2. Satisfactory                      3) Good            4) Very Good 5) Excellent**
2. Fee structure  
**1. Poor    2. Satisfactory                      3) Good            4) Very Good            5) Excellent**
3. Skill orientation of the courses you learnt  
**1. Poor    2. Satisfactory                      3) Good            4) Very Good            5) Excellent**
4. Infrastructure & Lab facilities  
**1. Poor    2. Satisfactory                      3) Good            4) Very Good            5) Excellent**
5. Library resources  
**1. Poor    2. Satisfactory                      3) Good            4) Very Good            5) Excellent**
6. Learning experience in terms of teaching and learning  
**1. Poor    2. Satisfactory                      3) Good            4) Very Good            5) Excellent**
7. Relevance of the course studied to the real life/ application  
**1. Poor    2. Satisfactory                      3) Good            4) Very Good            5) Excellent**
8. Content learnt in relation to your current job  
**1. Poor    2. Satisfactory                      3) Good            4) Very Good            5) Excellent**
9. Quality of support material supplied to you  
**1. Poor    2. Satisfactory                      3) Good            4) Very Good            5) Excellent**
10. Project Guidance  
**1. Poor    2. Satisfactory                      3) Good            4) Very Good            5) Excellent**
11. Industry/Filed/Library/Laboratory visits  
**1. Poor    2. Satisfactory                      3) Good            4) Very Good            5) Excellent**
12. Training & Placement  
**1. Poor    2. Satisfactory                      3) Good            4) Very Good            5) Excellent**
13. Faculty  
**1. Poor    2. Satisfactory                      3) Good            4) Very Good            5) Excellent**
14. University administrative ambience  
**1. Poor    2. Satisfactory                      3) Good            4) Very Good            5) Excellent**
15. Department administrative ambience  
**1. Poor    2. Satisfactory                      3) Good            4) Very Good            5) Excellent**
16. Hostel Facilities  
**1. Poor    2. Satisfactory                      3) Good            4) Very Good            5) Excellent**
17. Canteen Facilities  
**1. Poor    2. Satisfactory                      3) Good            4) Very Good            5) Excellent**
18. Alumni Association

1. Poor    2. Satisfactory    3) Good    4) Very Good    5) Excellent
19. Health facilities
1. Poor    2. Satisfactory    3) Good    4) Very Good    5) Excellent
20. Other basic amenities, especially water
1. Poor    2. Satisfactory    3) Good    4) Very Good    5) Excellent
21. Overall rating of academic programs
1. Poor    2. Satisfactory    3) Good    4) Very Good    5) Excellent
22. Overall Learning Environment in the University
1. Poor    2. Satisfactory    3) Good    4) Very Good    5) Excellent
23. Overall Rating of the University
1. Poor    2. Satisfactory    3) Good    4) Very Good    5) Excellent
24. Activities organized by the Department/College/Institute for your overall development
1. Poor    2. Satisfactory    3) Good    4) Very Good    5) Excellent

Your suggestions about curriculum revision, reforms in teaching, improvement in infrastructure and alumni engagement

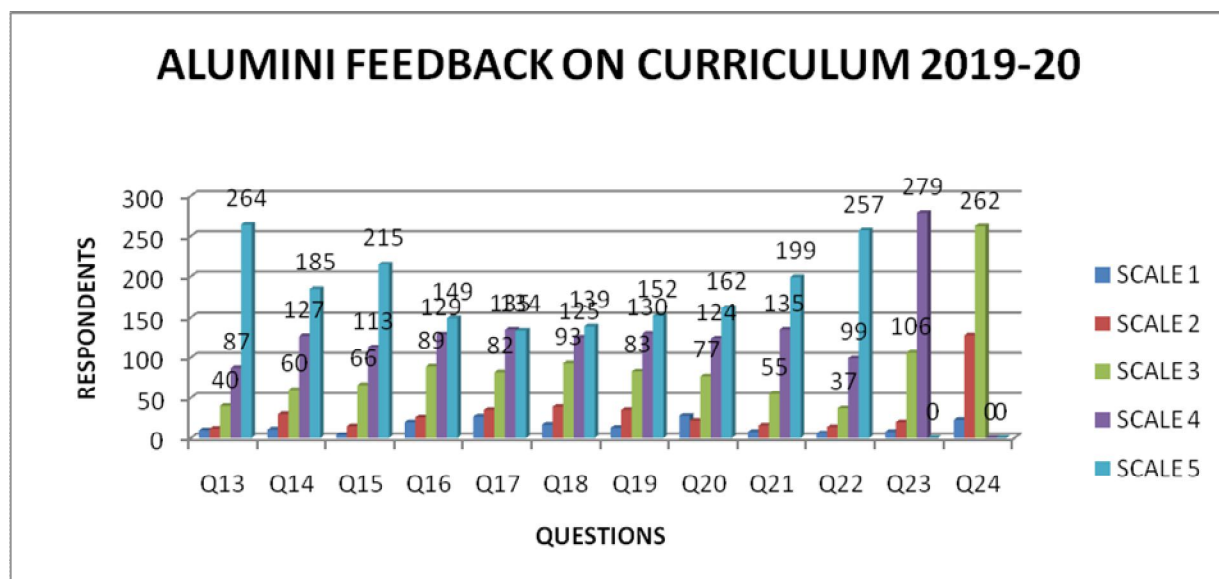
ALUMINI FEEDBACK ON CURRICULUM 2019-20 (Q1 – Q12)												
	Q1	Q2	Q3	Q4	Q5	Q6	Q7	Q8	Q9	Q10	Q11	Q12
SCALE 1	8	11	13	17	9	11	13	11	13	14	30	44
SCALE 2	11	19	14	20	16	12	21	23	23	29	23	46
SCALE 3	48	57	58	81	37	35	51	46	50	44	59	86
SCALE 4	118	109	125	127	84	107	142	108	121	99	114	110
SCALE 5	228	217	203	168	267	248	186	225	206	227	187	127
TOTAL	413	413	413	413	413	413	413	413	413	413	413	413



**Graph 6: Number of respondents on curricular by alumni from 1 to 5 scale. On 1 to 5 scale 1 denotes Poor and 5 denote Excellent.**

### ALUMINI FEEDBACK ON CURRICULUM 2019-20 (Q13 – Q24)

	Q13	Q14	Q15	Q16	Q17	Q18	Q19	Q20	Q21	Q22	Q23	Q24
<b>SCALE 1</b>	10	11	4	20	27	17	13	28	8	6	8	23
<b>SCALE 2</b>	12	30	15	26	35	39	35	22	16	14	20	128
<b>SCALE 3</b>	40	60	66	89	82	93	83	77	55	37	106	262
<b>SCALE 4</b>	87	127	113	129	135	125	130	124	135	99	279	0
<b>SCALE 5</b>	264	185	215	149	134	139	152	162	199	257	0	0
<b>TOTAL</b>	<b>413</b>	<b>413</b>	<b>413</b>	<b>413</b>	<b>413</b>	<b>413</b>	<b>413</b>	<b>413</b>	<b>413</b>	<b>413</b>	<b>413</b>	<b>413</b>



**Graph 7: Number of respondents on curricular by alumni from 1 to 5 scale. On 1 to 5 scale 1 denotes Poor and 5 denotes Excellent**

From above Table 1 to 24 questions, it is clear that 413 alumni have given suggestions related to curriculum. The prominent suggestions includes: curriculum must be related to the current demands of industry and corporate sectors; it must contained some part reserved for skill development and applied aspects.

## 5 .FEEDBACK FROM PARENTS:

We have taken the feedback from parents on curricular. We have designed a special feedback form on curriculum development. We have received feedback from 738 parents. Out of these 15 questions QN. 9 is related to curriculum. The details of feedback are as follows.

### A. Total feedback received: 738

### B. Questions Asked to Parents.

Relationship of Parent with Student : -----

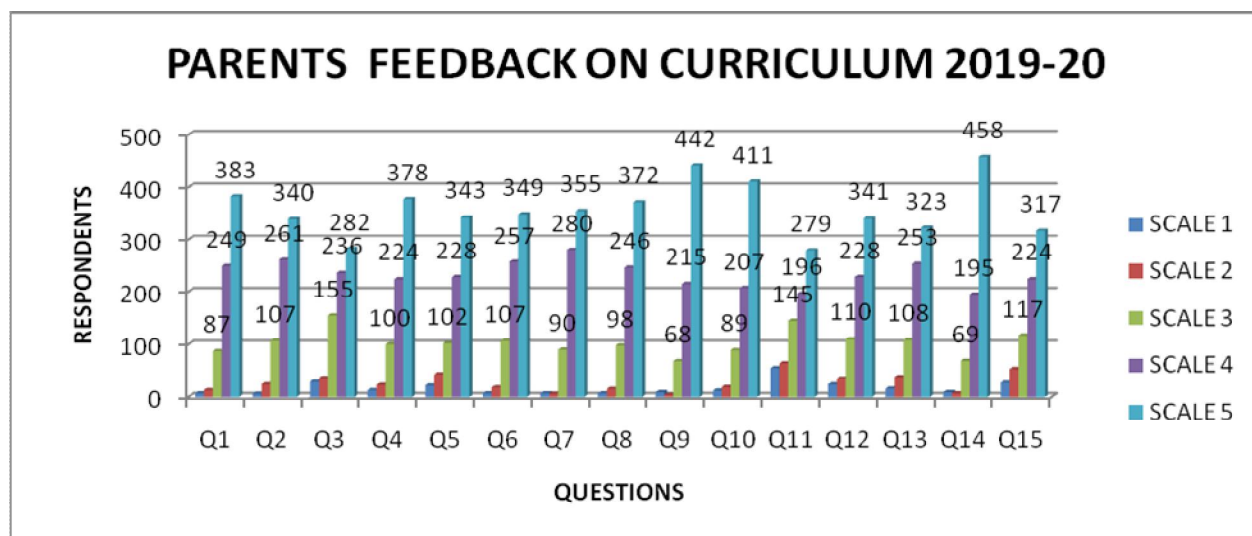
Academic Year : -----

Name of the son/daughter : -----

Department Studying : -----

1. The quality of the education in the University is  
**1. Poor    2. Satisfactory                      3) Good            4) Very Good            5) Excellent**
  2. How do you rate the quality and relevance of the courses included in the curriculum  
**1. Poor    2. Satisfactory                      3) Good            4) Very Good            5) Excellent**
  3. Your opinion about other activities like seminars, sports etc., conducted  
**1. Poor    2. Satisfactory                      3) Good            4) Very Good            5) Excellent**
  4. Your opinion about the department staff and their support to your ward  
**1. Poor    2. Satisfactory                      3) Good            4) Very Good            5) Excellent**
  5. Your opinion about the teachers and the laboratory equipment  
**1. Poor    2. Satisfactory                      3) Good            4) Very Good            5) Excellent**
  6. Your confidence on the employability of your ward based on this programme of study  
**1. Poor    2. Satisfactory                      3) Good            4) Very Good            5) Excellent**
  7. Academic growth of your ward  
**1. Poor    2. Satisfactory                      3) Good            4) Very Good            5) Excellent**
  8. Improvement in communication skill of your ward  
**1. Poor    2. Satisfactory                      3) Good            4) Very Good            5) Excellent**
  9. Your ward's consciousness about environment, energy conservation, cleanliness, and overall environment has improved  
**1. Poor    2. Satisfactory                      3) Good            4) Very Good            5) Excellent**
  10. Library Facilities  
**1. Poor    2. Satisfactory                      3) Good            4) Very Good            5) Excellent**
  11. Sports facilities  
**1. Poor    2. Satisfactory                      3) Good            4) Very Good            5) Excellent**
  12. Teachers engaging students with real life activities, teaching moral values and shaping their careers  
**1. Poor    2. Satisfactory                      3) Good            4) Very Good            5) Excellent**
  13. Is your ward given enough exposure as far as career orientation is concerned?/  
**1. Poor    2. Satisfactory                      3) Good            4) Very Good            5) Excellent**
  14. The total atmosphere of the University  
**1. Poor    2. Satisfactory                      3) Good            4) Very Good            5) Excellent**
  15. Are the authorities easily approachable regarding /any queries?  
**1. Poor    2. Satisfactory                      3) Good            4) Very Good            5) Excellent**
- Do you have any suggestion as to how this institution can help its students even more?

PARENTS FEEDBACK ON CURRICULUM 2019-20 (Q1 – Q15)															
	Q1	Q2	Q3	Q4	Q5	Q6	Q7	Q8	Q9	Q10	Q11	Q12	Q13	Q14	Q15
SCALE 1	07	06	29	13	22	07	07	07	09	12	55	24	16	09	27
SCALE 2	13	24	36	23	43	18	06	15	04	19	64	35	38	07	53
SCALE 3	87	107	155	100	102	107	90	98	68	89	145	110	108	69	117
SCALE 4	249	261	236	224	228	257	280	246	215	207	196	228	253	195	224
SCALE 5	383	340	282	378	343	349	355	372	442	411	279	341	323	458	317
TOTAL	739	738	738	738	738	738	738	738	738	738	739	738	738	738	738



**Graph 8: Number of respondents on curricular by parents to question No.1 to 15 on 1to 5 scale. On 1 to 5 scale 1 denotes Poor and 5 denote Excellent.**

Out of these 738 parents, some parents have given the feedback on curriculum and there suggestion includes: practical oriented papers must be included into the current syllabus, outcome based papers must be included in the syllabus, new innovative centers such as incubation center, center for skill development are to be formed for advance studiesand research activities.

## 6 Action tAken As per the FeedbAck on curricul um:

1. As per the feedback of each and every stakeholders with regard to all questions asked in the questionnaires, there is a positive response from all the stake holders (towards 4to 5 or 9 to 10) with respect to P.G courses and curriculum of KUD.
2. As per the suggestions of all the stakeholders, various new programmes and courses have been introduced and will be introduced in coming academic years.
3. As per the suggestions of all the stakeholders, the curriculum of various programmes have been revised accordingly and will try to modify as per the suggestions of all the stake holders coming academic years.
4. New certificate courses have been introduced as per the suggestions received.

5. The new programmes/courses have been introduced and revised as per the suggestions of the stakeholders mentioned in 1.2.1 and 1.1.2.

**Following improvements in Teaching-Learning has been undertaken in view of the suggestions:**

1. Smart Classrooms for all Department in the university
2. Organizing field visits in the Departments of like Botany and Zoology, geography etc.
3. Organizing Value Added courses/certificate courses in various Departments.
4. Providing scholarships to all Ph.D. and meritorious PG students
5. Conducting series of invited talks on Career Planning and Soft Skills Development in various Departments.
6. Conducting Employability programmes and skill oriented programmes have been organized through different organizations.

Director of IQAC



**KARNATAK UNIVRESITY, DHARWAD**  
**(Karnataka State)**

**CRITERIA-I**

**EVIDENCE(S) AS PER SOP**

<b>Metric No.</b> <b>1.4.1</b>	<b>Structured feedback about curricular received from</b> <b>1) Students, 2) Teachers, 3) Employers, 4) Alumni 5) Parents for design and</b> <b>review of syllabus</b> <b>Semester wise /year wise Options:</b> <b>A. Any 4 of above</b> <b>B. Any 3 of above</b> <b>C. Any 2 of above</b> <b>D. Any 1 of above</b> <b>E. None of the</b>
<p>➤ <i>Stakeholder feedback analysis report.</i></p> <p>➤ <i>Action taken report by the Institution on feedback report</i></p>	

**2020-21**

*Report on*  
*360<sup>0</sup> Structured Feedback from*  
*Stakeholders (Students,*  
*Teachers,*  
*Employers, Alumni and*  
*Parents)on*  
*Curriculum*

# **INDEX**

<b>SL. No.</b>	<b>Content</b>	<b>Page Numbers</b>
<b>1</b>	<b>Feedback Analysis of Student</b>	<b>1 - 3</b>
<b>2</b>	<b>Feedback Analysis of Teacher</b>	<b>4-5</b>
<b>3</b>	<b>Feedback Analysis of Employer</b>	<b>5-7</b>
<b>4</b>	<b>Feedback Analysis of Alumni</b>	<b>8-10</b>
<b>5</b>	<b>Feedback Analysis of Parents</b>	<b>11-13</b>
<b>6</b>	<b>Action Taken on the Feedback</b>	<b>13</b>

The feedback on curriculum by the students with other aspects has been a routine practice of Internal Quality Assurance Cell (IQAC). Exclusive feedback forms have been designed for the said purpose. The parameters basis of feedback are Learning values (in terms of skills, concepts, knowledge, analytical abilities, or broadening perspective), applicability/relevance to real life situations, depth of the Course content, extent of coverage of course, internal assessment procedure etc. The students' feedback has been a best practice of IQAC of KUD. We started collecting curriculum feedback from the Academic Year 2019-20 and 2020-21. This report presents the details of the feedback and its analysis with action taken on feedback aspects.

## 1. FEEDBACK FROM STUDENTS:

### C. Number of feedback received from students: 1730

#### D. Questions Asked to students

1. Why did you choose this course?
  - a) Degree requirement
  - b) Time offered
  - c) Interest
  - d) University reputation
2. Teachers
 

<b>Low</b>	<b>Moderate</b>	<b>High</b>	<b>Very High</b>	<b>Very Low</b>
------------	-----------------	-------------	------------------	-----------------
3. Level of effort
 

<b>Low</b>	<b>Moderate</b>	<b>High</b>	<b>Very High</b>	<b>Very Low</b>
------------	-----------------	-------------	------------------	-----------------
4. Level of effort put into the course
 

<b>Low</b>	<b>Moderate</b>	<b>High</b>	<b>Very High</b>	<b>Very Low</b>
------------	-----------------	-------------	------------------	-----------------
5. Contribution of learning
 

<b>Low</b>	<b>Moderate</b>	<b>High</b>	<b>Very High</b>	<b>Very Low</b>
------------	-----------------	-------------	------------------	-----------------
6. Level of skill/knowledge at start of course
 

<b>Low</b>	<b>Moderate</b>	<b>High</b>	<b>Very High</b>	<b>Very Low</b>
------------	-----------------	-------------	------------------	-----------------
7. Level of skill/knowledge at end of course
 

<b>Low</b>	<b>Moderate</b>	<b>High</b>	<b>Very High</b>	<b>Very Low</b>
------------	-----------------	-------------	------------------	-----------------
8. Level of skill/knowledge required to complete the course
 

<b>Low</b>	<b>Moderate</b>	<b>High</b>	<b>Very High</b>	<b>Very Low</b>
------------	-----------------	-------------	------------------	-----------------
9. Contribution of course to your skill/knowledge
 

<b>Low</b>	<b>Moderate</b>	<b>High</b>	<b>Very High</b>	<b>Very Low</b>
------------	-----------------	-------------	------------------	-----------------
10. Depth of course content
 

<b>Low</b>	<b>Moderate</b>	<b>High</b>	<b>Very High</b>	<b>Very Low</b>
------------	-----------------	-------------	------------------	-----------------

#### Skill and responsiveness of the instructor

11. Lectures were clear and well organized
 

<b>Strongly disagree</b>	<b>Disagree</b>	<b>Neutral</b>	<b>Agree</b>	<b>Strongly agree</b>
--------------------------	-----------------	----------------	--------------	-----------------------
12. Instructor stimulated students' interest
 

<b>Strongly disagree</b>	<b>Disagree</b>	<b>Neutral</b>	<b>Agree</b>	<b>Strongly agree</b>
--------------------------	-----------------	----------------	--------------	-----------------------
13. Instructor was available and helpful
 

<b>Strongly disagree</b>	<b>Disagree</b>	<b>Neutral</b>	<b>Agree</b>	<b>Strongly agree</b>
--------------------------	-----------------	----------------	--------------	-----------------------
14. Grading was prompt and had useful feedback
 

<b>Strongly disagree</b>	<b>Disagree</b>	<b>Neutral</b>	<b>Agree</b>	<b>Strongly agree</b>
--------------------------	-----------------	----------------	--------------	-----------------------
- Course Content
15. Learning objectives were clear

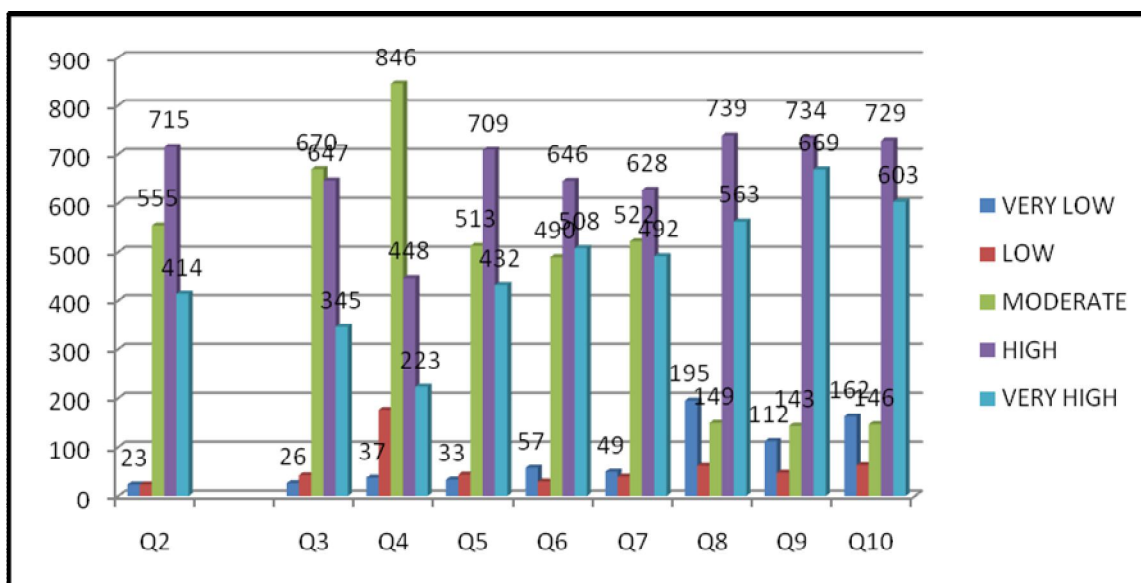
- Strongly disagree**   **Disagree**   **Neutral**   **Agree**   **Strongly agree**  
 16. Course content was organized and well planned  
**Strongly disagree**   **Disagree**   **Neutral**   **Agree**   **Strongly agree**  
 17. Course workload was appropriate  
**Strongly disagree**   **Disagree**   **Neutral**   **Agree**   **Strongly agree**  
 18. [Course organized to allow all students to participate fully  
**Strongly disagree**   **Disagree**   **Neutral**   **Agree**   **Strongly agree**

Q1. Why did you choose this course?

Response	No. of Students	Percentage
Degree requirement	80	<b>4.62</b>
Time offered	203	<b>11.73</b>
Interest	513	<b>29.65</b>
University reputation	934	<b>53.99</b>
<b>Total</b>	<b>1730</b>	<b>100.00</b>

Out of 1730 students, approximately 54 percent of the students joined the programs because of the reputation of the University, 30 percent of the students joined because of their interest.

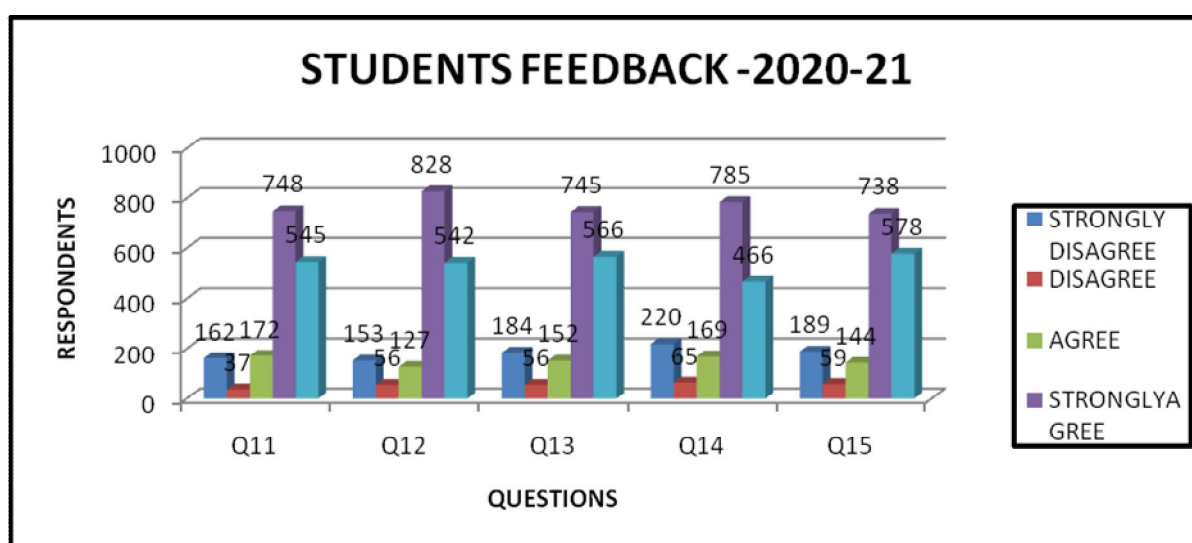
STUDENTS FEEDBACK -2020-21 (Q1-Q10)									
	Q2	Q3	Q4	Q5	Q6	Q7	Q8	Q9	Q10
<b>VERY LOW</b>	23	26	37	33	57	49	195	112	162
<b>LOW</b>	23	42	176	43	29	39	61	47	62
<b>MODERATE</b>	555	670	846	513	490	522	149	143	146
<b>HIGH</b>	715	647	448	709	646	628	739	734	729
<b>VERY HIGH</b>	414	345	223	432	508	492	563	669	603
<b>TOTAL</b>	<b>1730</b>	<b>1730</b>	<b>1730</b>	<b>1730</b>	<b>1730</b>	<b>1730</b>	<b>1730</b>	<b>1730</b>	<b>1730</b>



**Graph 1: Number of respondents for each of 8 questions by the students**

Out of 1730 students, majority of the students are given positive feedback about the curriculum related questions. (Q2 to Q10)

STUDENTS FEEDBACK -2020-21 (Q11-Q15)					
SCALE	Q11	Q12	Q13	Q14	Q15
STRONGLY DISAGREE	162	153	184	220	189
DISAGREE	37	56	56	65	59
AGREE	172	127	152	169	144
STRONGLYAGREE	748	828	745	785	738
NEUTRAL	545	542	566	466	578
TOTAL	1730	1730	1730	1730	1730



**Graph 2: Number of respondents for each of 8 questions by the students**

Out of 1730 students, majority of the students are strongly agreed that teachers are responsive, helpful, and skillful and prompt related to teaching and evaluation process. (Q11 to Q15)

## 2. FEEDBACK FROM TEACHERS:

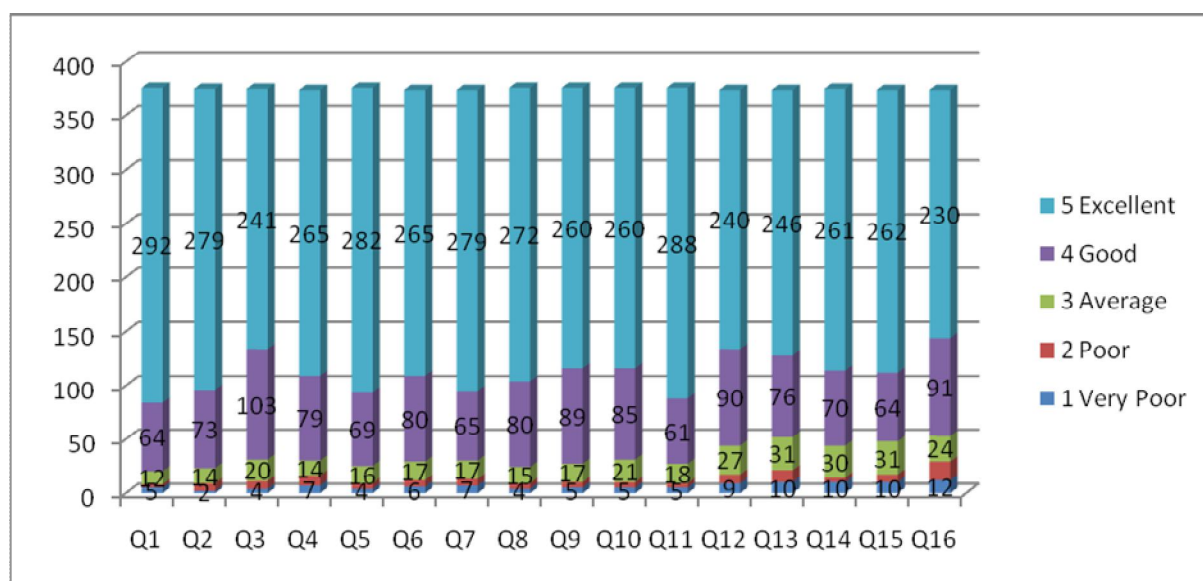
We have also taken the feedback from teacher on design and review of syllabus. We have designed a special feedback form on curriculum development. We have received feedback from 376 teachers. The details of feedback are as follow.

**C. Number of feedback received = 376**

**D. Questions Asked to Teachers**

17. The allocation of the credits to the course is appropriate  
**1-Very Poor, 2- Poor, 3- Average, 4- Good and 5-Excellent**
18. The depth of the course content is adequate to have significant learning outcomes  
**1-Very Poor, 2- Poor, 3- Average, 4- Good and 5-Excellent**
19. Syllabus is sufficient to bridge the gap between industry standards /current global scenarios and academics.  
**1-Very Poor, 2- Poor, 3- Average, 4- Good and 5-Excellent**
20. The timely coverage of syllabus is possible in the mentioned number of hours  
**1-Very Poor, 2- Poor, 3- Average, 4- Good and 5-Excellent**
21. The units/sections in the syllabus are properly sequenced  
**1-Very Poor, 2- Poor, 3- Average, 4- Good and 5-Excellent**
22. The recommended textbooks are adequate and map onto the syllabus  
**1-Very Poor, 2- Poor, 3- Average, 4- Good and 5-Excellent**
23. Sufficient reference material and books are available for the topics mentioned in the syllabus.  
**1-Very Poor, 2- Poor, 3- Average, 4- Good and 5-Excellent**
24. The programme and curriculum is enriched as compared to similar programme offered by other universities.  
**1-Very Poor, 2- Poor, 3- Average, 4- Good and 5-Excellent**
25. The designed experiments stimulate the interest of students in the subject and deepen their understanding through relating theory to practice (Experiential learning).  
**1-Very Poor, 2- Poor, 3- Average, 4- Good and 5-Excellent**
26. The practical's enabling to develop experimental, design, problem solving and analysis skills of the students.  
**1-Very Poor, 2- Poor, 3- Average, 4- Good and 5-Excellent**
27. The Vision, philosophy & objectives of the University are known  
**1-Very Poor, 2- Poor, 3- Average, 4- Good and 5-Excellent**
28. University provides opportunities for continuous development of Staff  
**1-Very Poor, 2- Poor, 3- Average, 4- Good and 5-Excellent**
29. Good facility and encouragement to the teachers for their research  
**1-Very Poor, 2- Poor, 3- Average, 4- Good and 5-Excellent**
30. Authorities are approachable and accessible  
**1-Very Poor, 2- Poor, 3- Average, 4- Good and 5-Excellent**
31. There is a mechanism for feedback, review and performance enhancement for the staff  
**1-Very Poor, 2- Poor, 3- Average, 4- Good and 5-Excellent**
32. There is a recognition/ Incentive/ Appreciation for the individual's work  
**1-Very Poor, 2- Poor, 3- Average, 4- Good and 5-Excellent**

CURRICULAM EVALUATION BY TEACHERS-2020-21 (Q1-Q16)																
SCALE	Q1	Q2	Q3	Q4	Q5	Q6	Q7	Q8	Q9	Q10	Q11	Q12	Q13	Q14	Q15	Q16
<b>1 Very Poor</b>																
<b>2 Poor</b>	5	2	4	7	4	6	7	4	5	5	5	9	10	10	10	12
<b>3 Average</b>	3	7	7	9	5	6	6	5	5	5	4	8	11	4	7	17
<b>4 Good</b>	12	14	20	14	16	17	17	15	17	21	18	27	31	30	31	24
<b>5 Excellent</b>	64	73	103	79	69	80	65	80	89	85	61	90	76	70	64	91
<b>5 Excellent</b>	292	279	241	265	282	265	279	272	260	260	288	240	246	261	262	230
<b>TOTAL</b>	<b>376</b>	<b>375</b>	<b>375</b>	<b>374</b>	<b>376</b>	<b>374</b>	<b>374</b>	<b>376</b>	<b>376</b>	<b>376</b>	<b>376</b>	<b>374</b>	<b>374</b>	<b>375</b>	<b>374</b>	<b>374</b>



**Graph 3: Number of Teachers responding on curricular based on 1 to 5 scales. On 5 point scale 1 denotes very poor and 5 denote Excellent.**

### 3. FEEDBACK FROM EMPLOYERS

We have taken the feedback from employer on design and review of syllabus. We have received feedback from 54 employers. The details of feedback are as follow.

**C. Number of feedback received =54**

**D. Questions Asked to Employers**

a. No. of candidates employed who are from Karnatak University

15. Technical skills/knowledge of the employee

**1. Poor    2. Satisfactory    3) Good    4) Very Good    5) Excellent**

16. General communication skills

**1. Poor    2. Satisfactory    3) Good    4) Very Good    5) Excellent**

17. Developing practical solutions to work place problems



- 1. Poor    2. Satisfactory    3) Good    4) Very Good    5) Excellent**
18. Working as part of a team
- 1. Poor    2. Satisfactory    3) Good    4) Very Good    5) Excellent**
19. Innovative and Creative in response to workplace challenges
- 1. Poor    2. Satisfactory    3) Good    4) Very Good    5) Excellent**
20. Self-motivated and taking on appropriate level of responsibility
- 1. Poor    2. Satisfactory    3) Good    4) Very Good    5) Excellent**
21. Open to new ideas and learning new techniques
- 1. Poor    2. Satisfactory    3) Good    4) Very Good    5) Excellent**
22. Ability to contribute to the goal of the organization
- 1. Poor    2. Satisfactory    3) Good    4) Very Good    5) Excellent**
23. Relationship with seniors/peers/subordinates
- 1. Poor    2. Satisfactory    3) Good    4) Very Good    5) Excellent**
24. Involvement in social activities
- 1. Poor    2. Satisfactory    3) Good    4) Very Good    5) Excellent**
25. Ability to take up extra responsibility
- 1. Poor    2. Satisfactory    3) Good    4) Very Good    5) Excellent**
26. Obligation to work beyond schedule if required
- 1. Poor    2. Satisfactory    3. Good    4. Very Good    5. Excellent**
27. On a scale of 1 to 10 how do you rate your overall satisfaction about the Karnatak

University students?

**1 Very Poor -----10 Highly Relevant**

28. On a scale of 1 to 10 how likely are your plans to prefer Karnatak University graduates in your future hiring?

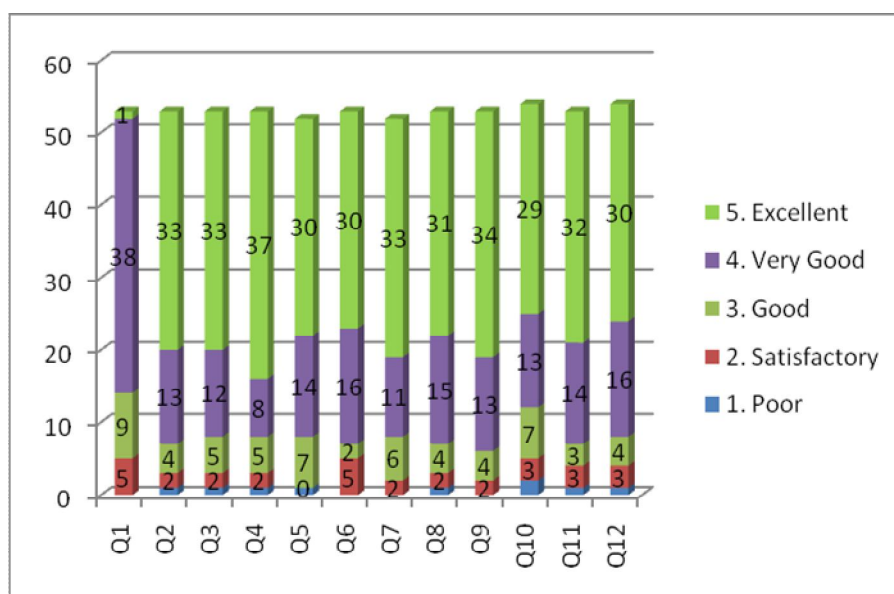
**1 Least Likely -----10 Most Likely**

b.What specific comments do you have regarding the Curriculum?

c.How could our programs be improved?

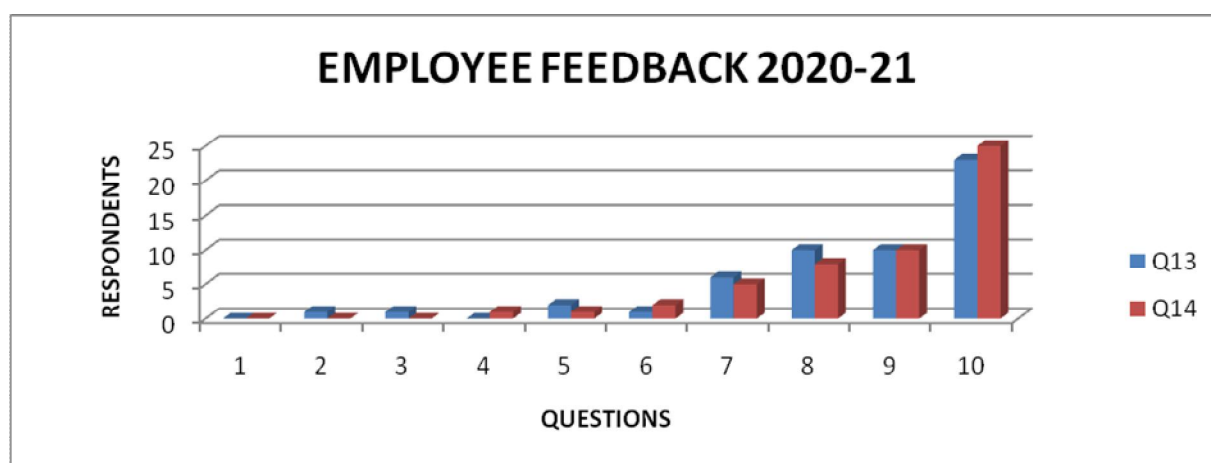
Please provide your contact details in case our assessment team members wish to contact you for further details. (Email.ID: Phone):

<b>EMPLOYER FEEDBACK-2020-21</b>												
<b>SCALE</b>	<b>Q1</b>	<b>Q2</b>	<b>Q3</b>	<b>Q4</b>	<b>Q5</b>	<b>Q6</b>	<b>Q7</b>	<b>Q8</b>	<b>Q9</b>	<b>Q10</b>	<b>Q11</b>	<b>Q12</b>
<b>1. Poor</b>	0	1	1	1	1	0	0	1	0	2	1	1
<b>2. Satisfactory</b>	5	2	2	2	0	5	2	2	2	3	3	3
<b>3. Good</b>	9	4	5	5	7	2	6	4	4	7	3	4
<b>4. Very Good</b>	38	13	12	8	14	16	11	15	13	13	14	16
<b>5. Excellent</b>	1	33	33	37	30	30	33	31	34	29	32	30
<b>TOTAL</b>	<b>53</b>	<b>53</b>	<b>53</b>	<b>53</b>	<b>52</b>	<b>53</b>	<b>52</b>	<b>53</b>	<b>53</b>	<b>54</b>	<b>53</b>	<b>54</b>



**Graph 4: Number of respondents on curricular by employs based on 1 to 5 scales. Scale 1 denotes poor and 5 denotes Excellent.**

EMPLOYER FEEDBACK-2020-21 (Q13 & Q14)		
SCALE	Q13	Q14
1	0	0
2	1	0
3	1	0
4	0	1
5	2	1
6	1	2
7	6	5
8	10	8
9	10	10
10	23	25
TOTAL	54	54



**Graph 5: Number of respondents on curricular by employs on 1 to 10 scale. Scale 1**

denotes Very Poor and Least Likely and 10 denote Highly Relevant and Most Likely for Q13 & Q14 respectively.

## 4. FEEDBACK FROM ALUMINI

We have taken the feedback responses by alumni of KUD on design and review of syllabus. We have designed a special feedback form on curriculum development. We have received feedback from 413 alumni. The details of feedback are as follow.

**C. Total feedback received = 413**

**D. Questions Asked to Alumni**

Name :-----

Year of Passing out :-----

Course studied :-----

**Present Address with Details**

25. Admission Procedure/

**1. Poor    2. Satisfactory    3) Good    4) Very Good 5) Excellent**

26. Fee structure

**1. Poor    2. Satisfactory    3) Good    4) Very Good    5) Excellent**

27. Skill orientation of the courses you learnt

**1. Poor    2. Satisfactory    3) Good    4) Very Good    5) Excellent**

28. Infrastructure & Lab facilities

**1. Poor    2. Satisfactory    3) Good    4) Very Good    5) Excellent**

29. Library resources

**1. Poor    2. Satisfactory    3) Good    4) Very Good    5) Excellent**

30. Learning experience in terms of teaching and learning

**1. Poor    2. Satisfactory    3) Good    4) Very Good    5) Excellent**

31. Relevance of the course studied to the real life/ application

**1. Poor    2. Satisfactory    3) Good    4) Very Good    5) Excellent**

32. Content learnt in relation to your current job

**1. Poor    2. Satisfactory    3) Good    4) Very Good    5) Excellent**

33. Quality of support material supplied to you

**1. Poor    2. Satisfactory    3) Good    4) Very Good    5) Excellent**

34. Project Guidance

**1. Poor    2. Satisfactory    3) Good    4) Very Good    5) Excellent**

35. Industry/Field/Library/Laboratory visits

**1. Poor    2. Satisfactory    3) Good    4) Very Good    5) Excellent**

36. Training & Placement

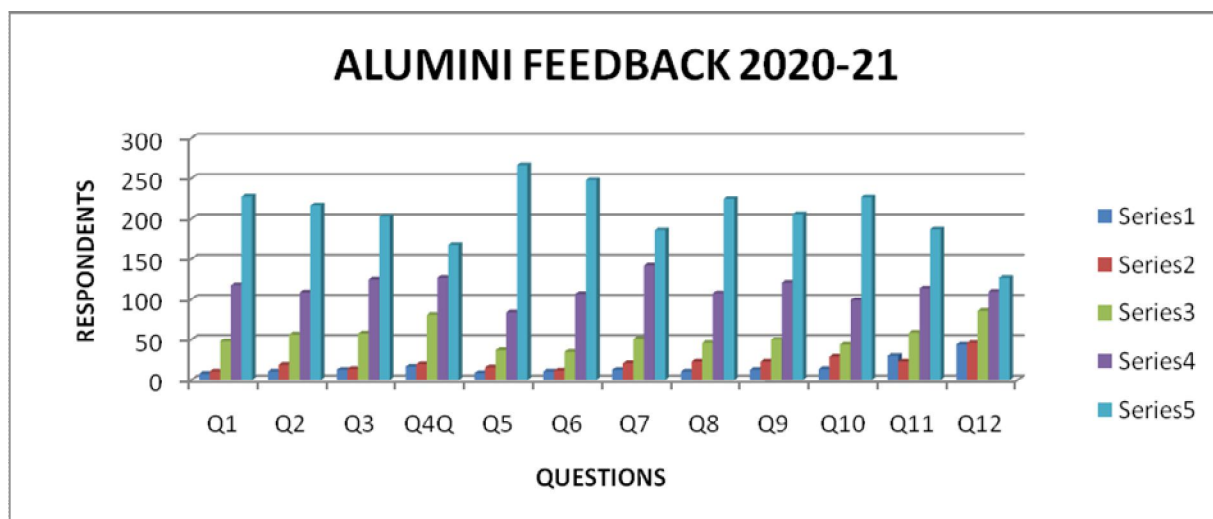
**1. Poor    2. Satisfactory    3) Good    4) Very Good    5) Excellent**

37. Faculty

- 1. Poor    2. Satisfactory    3) Good    4) Very Good    5) Excellent**  
 38. University administrative ambience
- 1. Poor    2. Satisfactory    3) Good    4) Very Good    5) Excellent**  
 39. Department administrative ambience
- 1. Poor    2. Satisfactory    3) Good    4) Very Good    5) Excellent**  
 40. Hostel Facilities
- 1. Poor    2. Satisfactory    3) Good    4) Very Good    5) Excellent**  
 41. Canteen Facilities
- 1. Poor    2. Satisfactory    3) Good    4) Very Good    5) Excellent**  
 42. Alumni Association
- 1. Poor    2. Satisfactory    3) Good    4) Very Good    5) Excellent**  
 43. Health facilities
- 1. Poor    2. Satisfactory    3) Good    4) Very Good    5) Excellent**  
 44. Other basic amenities, especially water
- 1. Poor    2. Satisfactory    3) Good    4) Very Good    5) Excellent**  
 45. Overall rating of academic programs
- 1. Poor    2. Satisfactory    3) Good    4) Very Good    5) Excellent**  
 46. Overall Learning Environment in the University
- 1. Poor    2. Satisfactory    3) Good    4) Very Good    5) Excellent**  
 47. Overall Rating of the University
- 1. Poor    2. Satisfactory    3) Good    4) Very Good    5) Excellent**  
 48. Activities organized by the Department/College/Institute for your overall development
- 1. Poor    2. Satisfactory    3) Good    4) Very Good    5) Excellent**

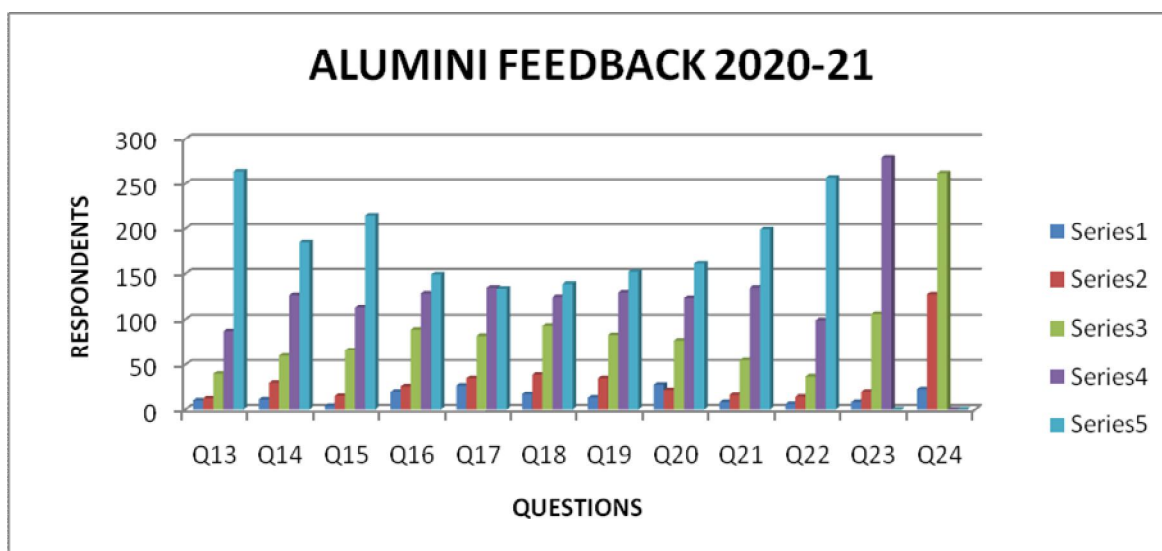
Your suggestions about curriculum revision, reforms in teaching, improvement in infrastructure and alumni engagement

<b>ALUMNI FEEDBACK - 2020-21</b>												
<b>SCALE</b>	<b>Q1</b>	<b>Q2</b>	<b>Q3</b>	<b>Q4Q</b>	<b>Q5</b>	<b>Q6</b>	<b>Q7</b>	<b>Q8</b>	<b>Q9</b>	<b>Q10</b>	<b>Q11</b>	<b>Q12</b>
<b>1</b>	8	11	13	17	9	11	13	11	13	14	30	44
<b>2</b>	11	19	14	20	16	12	21	23	23	29	23	46
<b>3</b>	48	57	58	81	37	35	51	46	50	44	59	86
<b>4</b>	118	109	125	127	84	107	142	108	121	99	114	110
<b>5</b>	228	217	203	168	267	248	186	225	206	227	187	127
<b>Total</b>	<b>413</b>	<b>413</b>	<b>413</b>	<b>413</b>	<b>413</b>	<b>413</b>	<b>413</b>	<b>413</b>	<b>413</b>	<b>413</b>	<b>413</b>	<b>413</b>



**Graph 6: Number of respondents on curricular by alumni from 1 to 5 scale. On 1 to 5 scale 1 denotes Poor and 5 denote Excellent.**

ALUMNI FEEDBACK - 2020-21												
SCALE	Q13	Q14	Q15	Q16	Q17	Q18	Q19	Q20	Q21	Q22	Q23	Q24
1	10	11	4	20	27	17	13	28	8	6	8	23
2	12	30	15	26	35	39	35	22	16	14	20	128
3	40	60	66	89	82	93	83	77	55	37	106	262
4	87	127	114	129	135	125	130	124	135	99	279	0
5	264	185	215	149	134	139	152	162	199	257	0	0
Total	413	413	414	413	413	413	413	413	413	413	413	413



**Graph 7: Number of respondents on curricular by alumni from 1 to 5 scale. On 1 to 5 scale 1 denotes Poor and 5 denotes Excellent**

From above Table 1 to 24 questions, it is clear that 413 alumni have given suggestions related to curriculum. The prominent suggestions includes: curriculum must be related to the current demands of industry and corporate sectors; it must contained some part

reserved for skill development and applied aspects.

## 5, FEEDBACK FROM PARENTS:

We have taken the feedback from parents on curricular. We have designed a special feedback form on curriculum development. We have received feedback from 740 parents. Out of these 15 questions QN. 9 is related to curriculum. The details of feedback are as follows.

**C. Total feedback received: 740**

**D. Questions Asked to Parents.**

Relationship of Parent with Student : -----

Academic Year : -----

Name of the son/daughter : -----

Department Studying : -----

16. The quality of the education in the University is

**1. Poor    2. Satisfactory                      3) Good            4) Very Good            5) Excellent**

17. How do you rate the quality and relevance of the courses included in the curriculum

**1. Poor    2. Satisfactory                      3) Good            4) Very Good            5) Excellent**

18. Your opinion about other activities like seminars, sports etc., conducted

**1. Poor    2. Satisfactory                      3) Good            4) Very Good            5) Excellent**

19. Your opinion about the department staff and their support to your ward

**1. Poor    2. Satisfactory                      3) Good            4) Very Good            5) Excellent**

20. Your opinion about the teachers and the laboratory equipment

**1. Poor    2. Satisfactory                      3) Good            4) Very Good            5) Excellent**

21. Your confidence on the employability of your ward based on this programme of study

**1. Poor    2. Satisfactory                      3) Good            4) Very Good            5) Excellent**

22. Academic growth of your ward

**1. Poor    2. Satisfactory                      3) Good            4) Very Good            5) Excellent**

23. Improvement in communication skill of your ward

**1. Poor    2. Satisfactory                      3) Good            4) Very Good            5) Excellent**

24. Your ward's consciousness about environment, energy conservation, cleanliness, and overall environment has improved

**1. Poor    2. Satisfactory                      3) Good            4) Very Good            5) Excellent**

25. Library Facilities

**1. Poor    2. Satisfactory                      3) Good            4) Very Good            5) Excellent**

26. Sports facilities

**1. Poor    2. Satisfactory    3) Good    4) Very Good    5) Excellent**  
 27. Teachers engaging students with real life activities, teaching moral values and shaping their careers

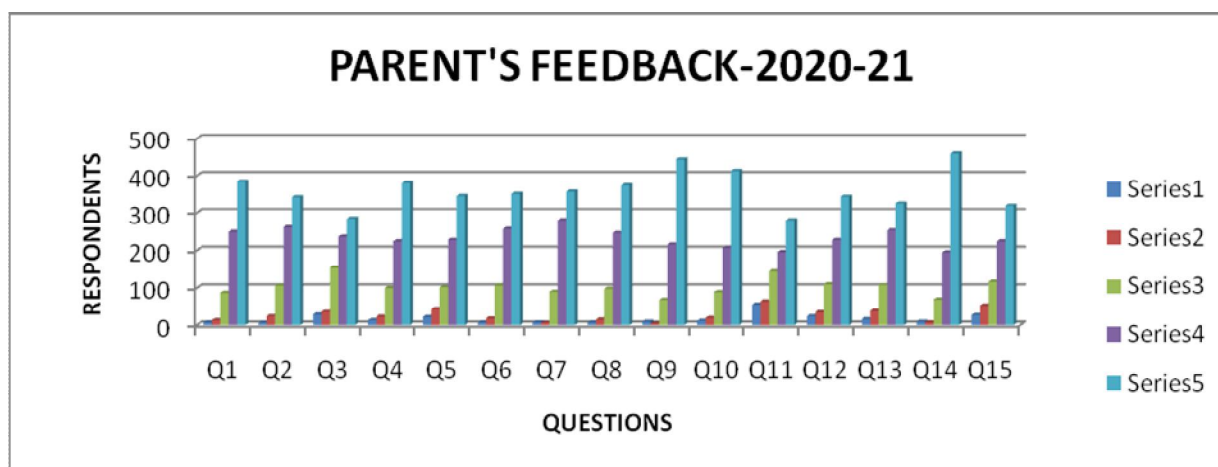
**1. Poor    2. Satisfactory    3) Good    4) Very Good    5) Excellent**  
 28. Is your ward given enough exposure as far as career orientation is concerned?/

**1. Poor    2. Satisfactory    3) Good    4) Very Good    5) Excellent**  
 29. The total atmosphere of the University

**1. Poor    2. Satisfactory    3) Good    4) Very Good    5) Excellent**  
 30. Are the authorities easily approachable regarding /any queries?

**1. Poor    2. Satisfactory    3) Good    4) Very Good    5) Excellent**  
 Do you have any suggestion as to how this institution can help its students even more?

PARENT'S FEEDBACK-2020-21 (740)															
SCALE	Q1	Q2	Q3	Q4	Q5	Q6	Q7	Q8	Q9	Q10	Q11	Q12	Q13	Q14	Q15
1	7	6	29	13	22	7	7	7	9	12	55	24	16	9	27
2	13	24	36	23	43	18	6	15	4	19	64	35	38	7	53
3	87	107	155	100	102	107	90	98	68	89	145	110	108	69	117
4	249	261	236	224	228	257	280	246	216	207	196	228	253	195	224
5	384	342	284	380	345	351	357	374	444	413	280	343	325	460	319
Total	740	740	740	740	740	740	740	740	741	740	740	740	740	740	740



**Graph 8: Number of respondents on curricular by parents to question No.1 to 15 on 1 to 5 scale. On 1 to 5 scale 1 denotes Poor and 5 denotes Excellent.**

Out of these 738 parents, some parents have given the feedback on curriculum and their suggestion includes: practical oriented papers must be included into the current syllabus, outcome based papers must be included in the syllabus, new innovative centers such as incubation center, center for skill development are to be formed for advance studies and research activities.

## **6. Action tAken As per the FeedbAck on curricul um:**

7. As per the feedback of each and every stakeholders with regard to all questions asked in the questionnaires, there is a positive response from all the stake holders (towards 4to 5 or 9 to 10) with respect to P.G courses and curriculum of KUD.
8. As per the suggestions of all the stakeholders, various new programmes and courses have been introduced and will be introduced in coming academic years.
9. As per the suggestions of all the stakeholders, the curriculum of various programmes have been revised accordingly and will try to modify as per the suggestions of all the stake holders coming academic years.
10. New certificate courses have been introduced as per the suggestions received.
11. The news programmes/courses have been introduced and revised as per the suggestions of the stakeholders mentioned in 1.2.1 and 1.1.2.

### **Following improvements in Teaching-Learning has been undertaken in view of the suggestions:**

5. Smart Classrooms for all Department in the university
6. Organizing field visits in the Departments of like Botany and Zoology, geography etc.
7. Organizing Value Added courses/certificate courses in various Departments.
8. Providing scholarships to all Ph.D. and meritorious PG students
9. Conducting series of invited talks on Career Planning and Soft Skills Development in variousDepartments.
10. Conducting Employability programmes and skill oriented programmes have been organized through different organizations.

Director of IQAC